

PT ASAHI SYNCHROTECH INDONESIA

To Be The Company Chosen by Challenge & Creation



Company Overview

Since 1991



200+

Projects Completed

100+

Skilled Professionals

150+

Client Served

30+

Years of Experiences

Founded as Mekar Intidian Corporation in 1991 and rebranded as PT Asahi Synchrotech Indonesia in 1999, we are a leading mechanical and electrical engineering contractor backed by the expertise and support of Asahi Synchrotech Corporation (Japan) and TOENEC. With a team of 108 skilled professionals, including designers, project managers, and engineers from Indonesia, Japan, and the Philippines, we deliver precision-driven solutions that enhance productivity and contribute to Indonesia's growth.

Our engineering division is equipped with specialists in both mechanical and electrical disciplines, ensuring meticulous design and execution from concept to completion. Supported by a robust construction division and a dedicated safety & quality team, we manage complex projects with a commitment to excellence.

Our ownership structure underscores our strong international ties, with Asahi Synchrotech Corporation holding our main shares, reflecting our deep-rooted connection to Japanese engineering excellence.



Vision

Asahi Synchrotech Indonesia, as an engineering company delivering highly productive projects, contributes to the development of Indonesia. We continually provide sustainable corporate value to our customers, employees, and suppliers.

#1 Exceeding Expectations with Speed

Deliver faster valuable information that exceeds customer expectations.

#1 Quality Through Collaboration

Collaborate with various suppliers and vendors to provide consistent quality to customers.

#1 Optimizing Projects from the Start

Starting from upstream project planning to provide more optimal and faster solutions.

#1 Fostering a Culture of Discipline

Cultivating high discipline in the company.

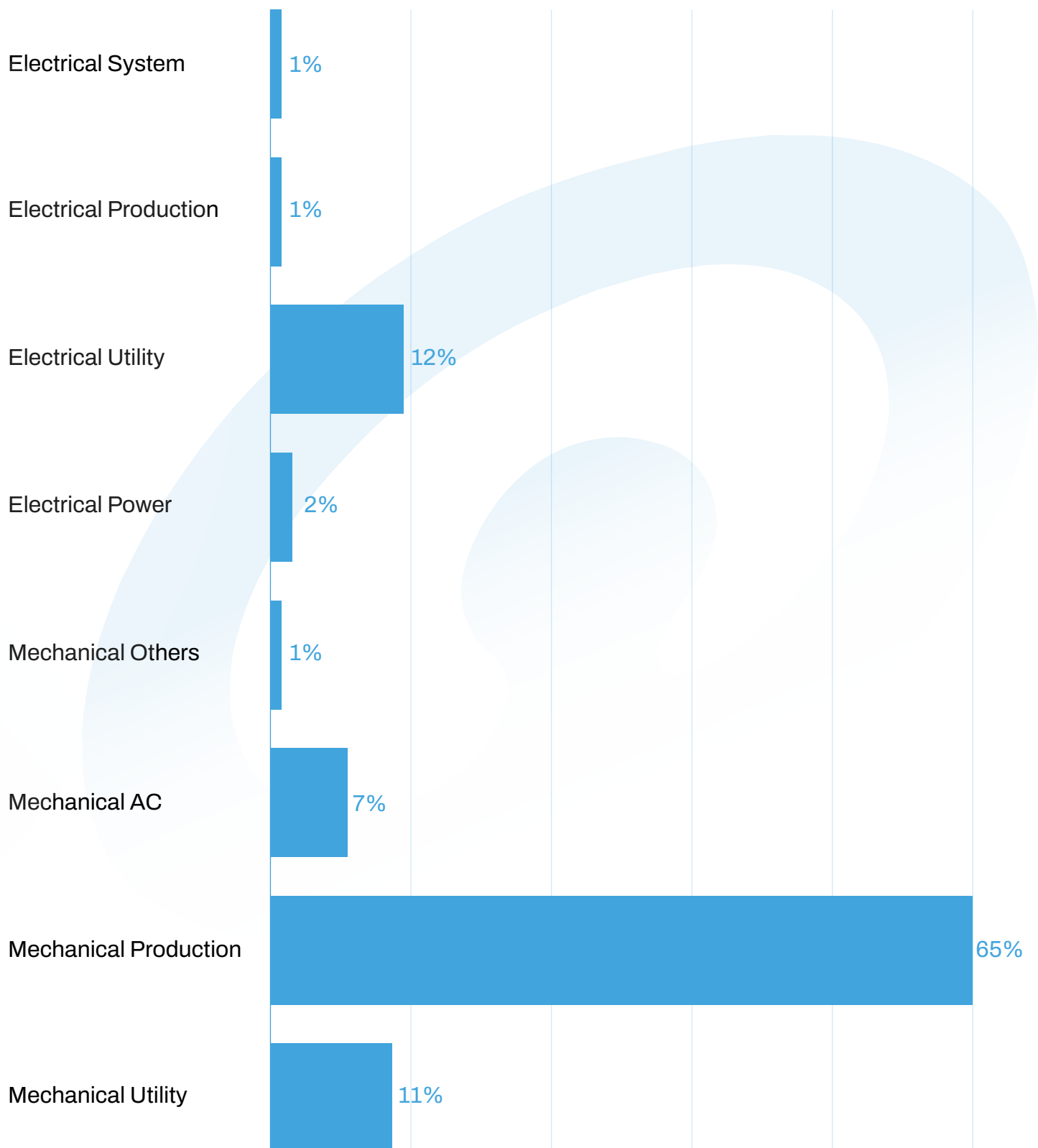
Management

Meet the leadership team that ensuring the successful execution of every project through strategic planning, and a commitment to operational excellence.



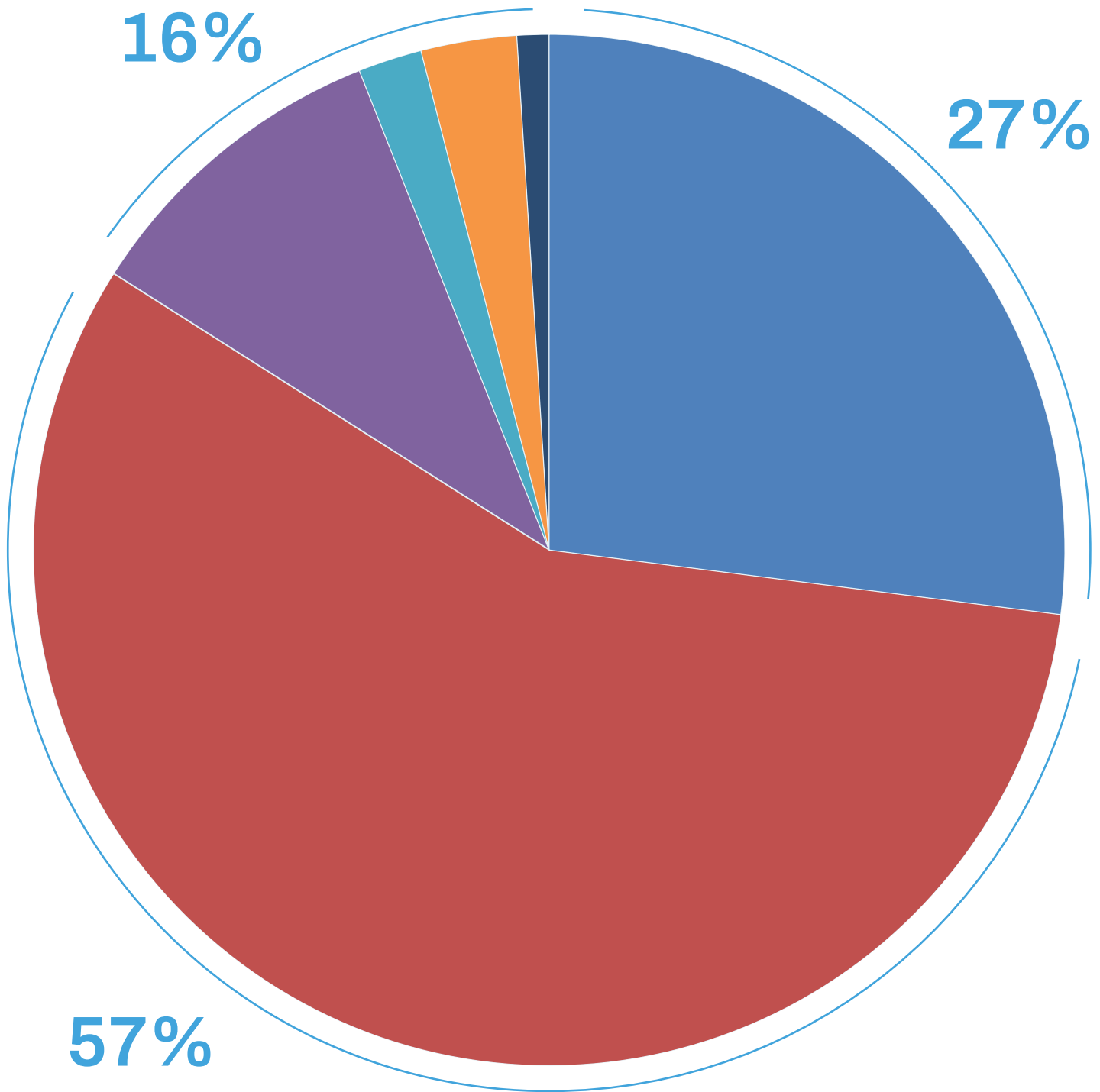
Construction Results

2022-2024



Business Segment

Industry Segment
2022-2024



16%

Others (Parts Material Manufacture, Electrical Part, Automobile Part, Glass Material Part)

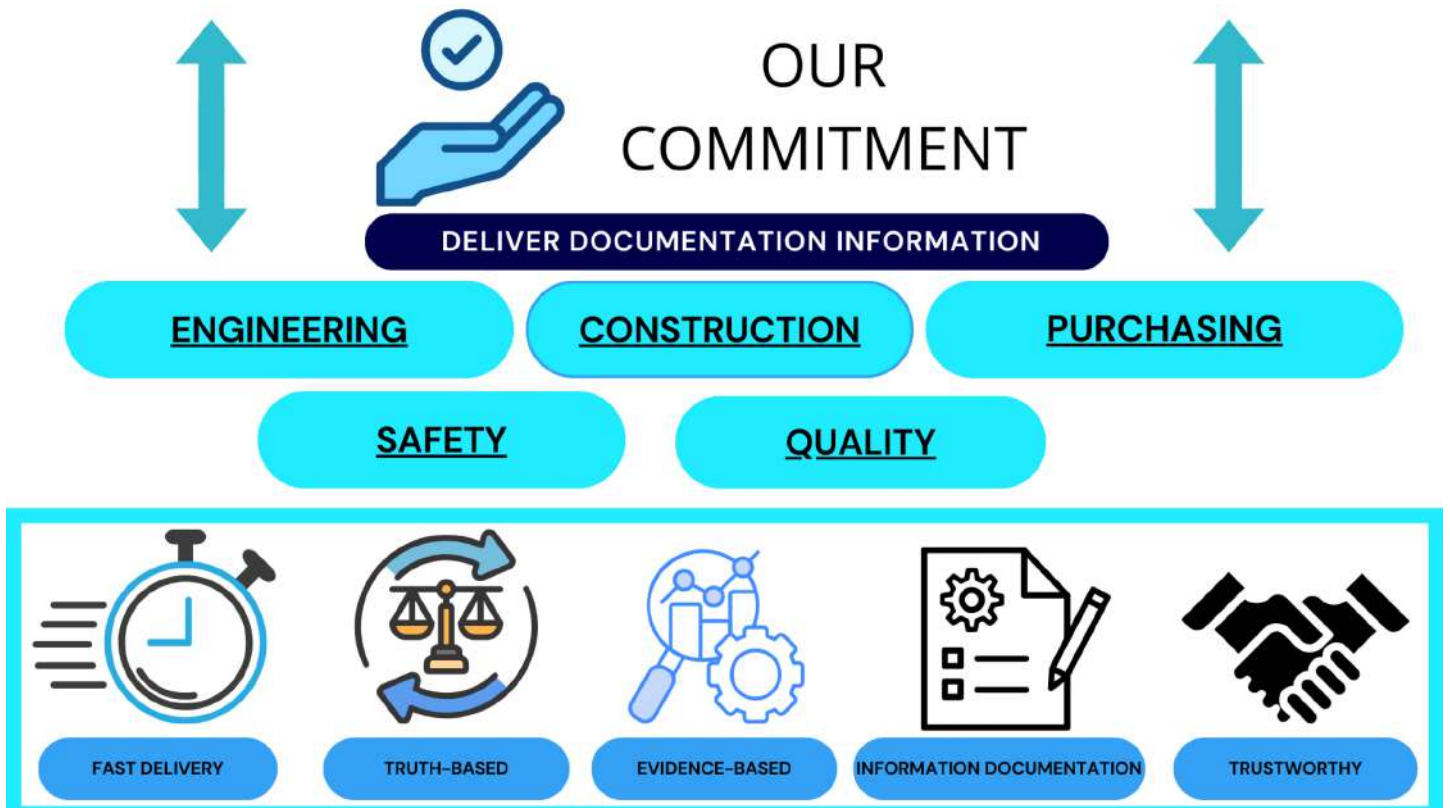
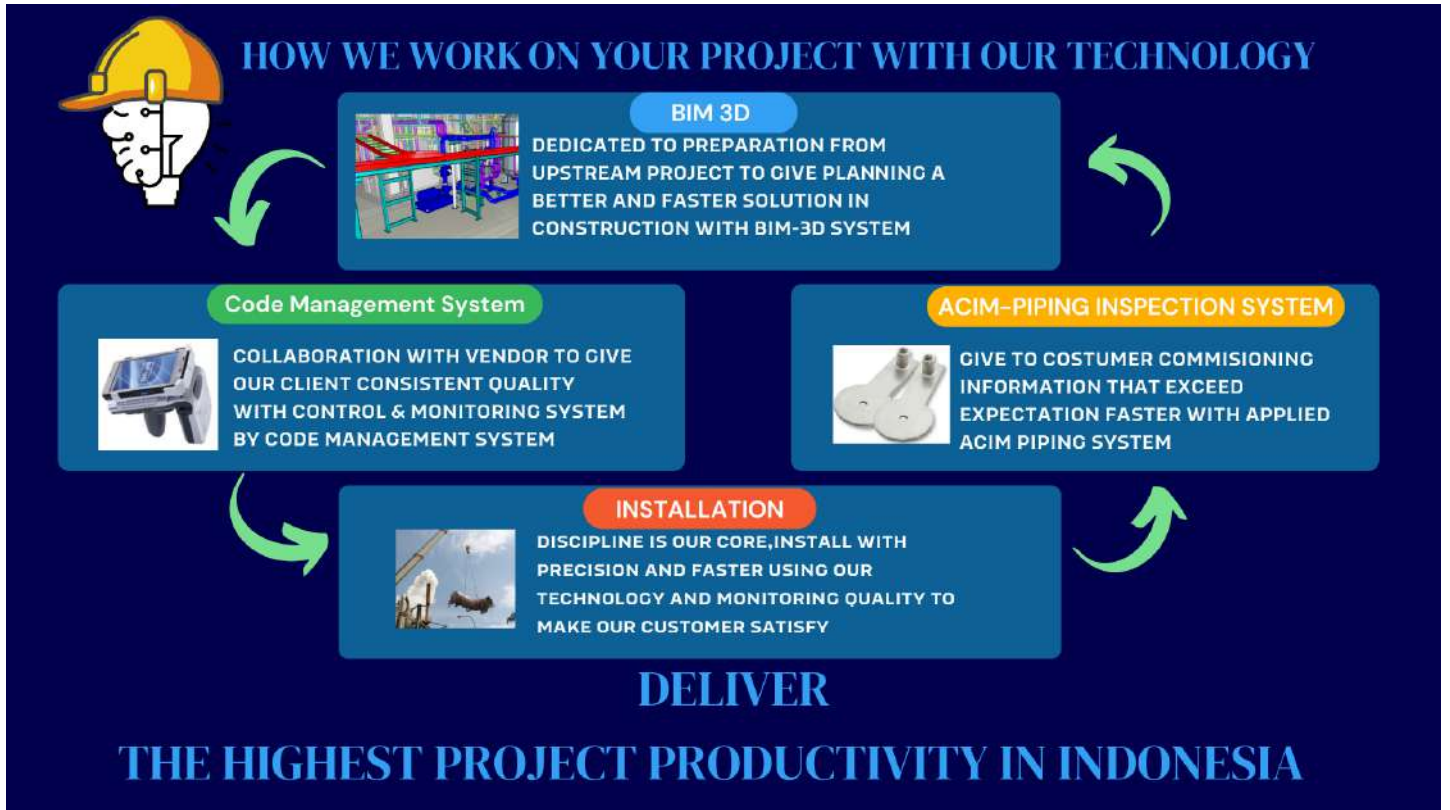
27%

Food & Beverage

57%

Chemical Plant & Basic Metal

Technology



Services



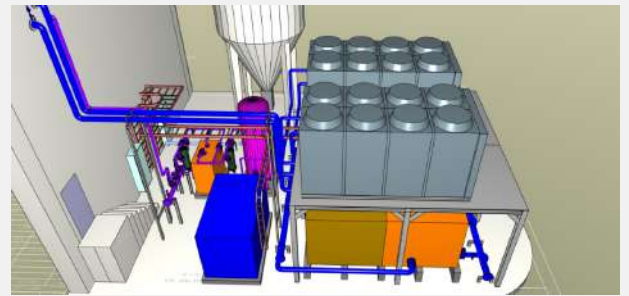
01. Investigation & Proposal

Provision of Solution

- ✓ Need to consider cost-effectiveness
- ✓ Consider introducing new technology
- ✓ Value engineering consultation
- ✓ Investment planning support services

02. Design

- ✓ Efficient 3D Design System
- ✓ Visual Presentation for Project Owners
- ✓ Automatic and Accurate Material Calculation
- ✓ Coordination Challenges and Integrated Design



03. Procurement

- ✓ Supplying top-quality utilities, equipment, and materials for all project needs.
- ✓ Ensuring precise material tracking from fabrication to installation.
- ✓ Real-time monitoring for seamless, trustworthy procurement.

04. Factory Production

Specialized in various factory production

- ✓ Collaborating with specialized factories for quality equipment construction.
- ✓ Ensuring quality, timely delivery, cost control, and accurate product drawings.
- ✓ Setting inspection items early and conducting witness checks as needed.





05. Construction

Comprehensive On-Site Construction Services for Precision and Efficiency

- ✓ Delivering efficient construction directly at your location.
- ✓ Overseeing logistics, workforce, and quality monitoring for seamless results.
- ✓ Ensuring timelines, budgets, and environmental standards are met.

06. Commissioning

Protect workers and keep promises to customers

- ✓ Ensuring daily construction and commissioning excellence in every project.
- ✓ Developing, executing, and reviewing work plans to prevent injuries.
- ✓ Anticipating conditions in commissioning to avoid accidents.
- ✓ Implementing inspections to ensure equipment capability and quality.



07. Maintenance

Ensuring Optimal Factory Performance Through Comprehensive Maintenance Services

- ✓ Maintain factory operations to ensure consistent productivity and profitability.
- ✓ Prevent downtime with comprehensive and forward-thinking maintenance services.
- ✓ Keep every aspect of your facility running at peak efficiency.

Client Collaboration List

2022

PT Heinz ABC Indonesia

PT Garudafood Putra Putri Jaya Tbk

PT Tirta Investama (Danone Aqua)

PT NSK Bearings Manufacturing Indonesia

PT Kyowa Indonesia

PT Indonesia Epson Industry

PT Panasonic ICI

PT KSAP Indonesia (Kumon)

PT Kaneka Foods Indonesia

PT Indonakano

PT Takenaka Indonesia

PT Takenaka Indonesia (Ogawa Indonesia)

PT Takenaka Indonesia (Global Shinsei)

PT Takenaka Indonesia (YKK Zipper)

PT DJK Indonesia (Glico Manufacturing Indonesia)

PT Chiyoda International Indonesia

PT EDS Manufacturing Indonesia

PT ESR Indonesia Properties One

PT AJE Indonesia

PT Gulbrandsen Technologies Indonesia

PT Nutribev Sinergy Indonesia (Kaldu Sari Nabati)

2023

PT Heinz ABC Indonesia

PT Tirta Investama (Danone Aqua)

PT NSK Bearings Manufacturing Indonesia

PT Kyowa Indonesia

PT Indonesia Epson Industry

PT Panasonic ICI

PT KSAP Indonesia (Kumon)

PT Kaneka Foods Indonesia

PT Indonakano

PT Takenaka Indonesia

PT Takenaka (Seirokya)

PT Penta-Ocean Construction (Itomol)

PT DJK Indonesia (Glico Manufacturing Indonesia)

PT Chiyoda International Indonesia (Freeport McMoRan)

PT Asahi Mass Flat Glass

PT Indopoly Swakarsa Industry Tbk

2024

PT Chiyoda International Indonesia

PT Indonesia Epson Industry

PT NSK Bearings Manufacturing Indonesia

PT Kyowa Indonesia

PT Garudafood Putra Putri Jaya Tbk

PT Heinz ABC Indonesia

Sidel Blowing & Services

PT DJK Indonesia (Ajinomoto Indonesia)

PT Indoagri Daito Cacao

PT Kaneka Foods Indonesia

PT Asahi Mass Flat Glass

PT Freeport Indonesia

PT DJK Indonesia (Glico Manufacturing Indonesia)

PT Indopoly Swakarsa Industry Tbk

PT KSAP Indonesia (Kumon)

PT Takenaka (Seirokya)

PT Tirta Sibayakindo (Danone Aqua Brastagi)

PT Panasonic ICI

PT Indonesia Toray Synthetics

PT Cabot Indonesia

PT Penta-Ocean Construction (Itomol)

PT Supernova Flexible Packaging

PT Indonakano (Minda ASEAN Automotive)



Human Development Training

To gain a competitive advantage, the company need to be adaptable and creative. We have been developing the employees by several activities. One of the main programs is Training Program. We have the internal and external skilled trainers who share their knowledge and skill to our employees to boost employee's performance aligned to our company's strategy.





Internship Program

We have standardized our values since the employees join our team by our program named INTERNSHIP PROGRAM.

Our visual image of the future is to achieve targets systematically by structured employee development.

In the internship program, sure the interns will gain professional learning experience that offer practical experiences related to student studies at universities.

We choose reputable universities to get the excellent talents input of employee more compatible with our strategy, with the hope that these employees will have a high spirit of achievement, fast learners, easier to direct and can be projected into the long term as potential employees of the company.

INTERNSHIP PROGRAM PERIOD



2 interns majoring in engineering
(mechanical and electrical)



1 intern majoring in management
(law, administration, psychology,
business, management, economy
and accounting)

Awards & Certificates



CSMS AWARDS 2022



5M TBL CERTIFICATE SUBCON



20 MILLION MANHOURS



30 MILLION MANHOURS

Health, Safety & Environment

3.600.000 Safe Man Hours

Without Lost Time Injury In 2024



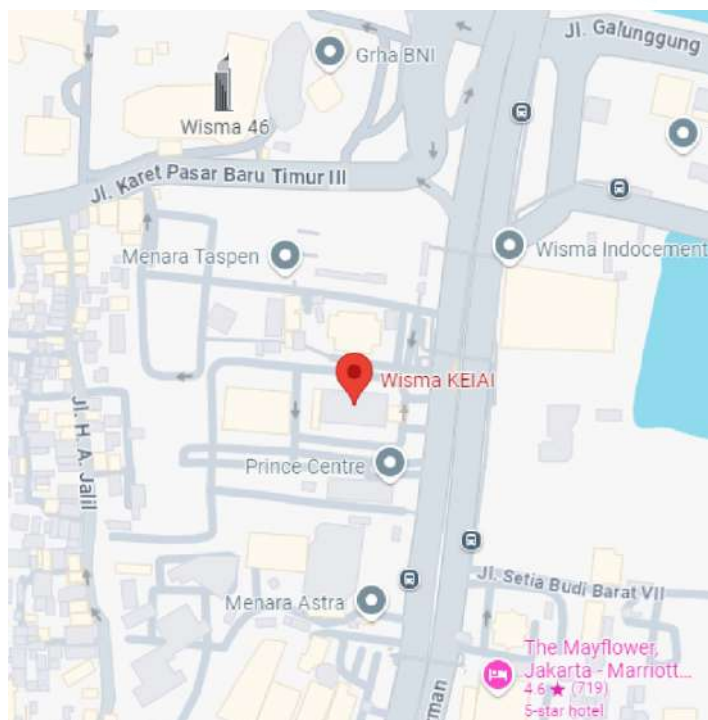
Parent Company

As a subsidiary of Asahi Synchrotech Corporation (Japan) Company headquartered in Japan, Asahi Synchrotech Indonesia offers top-tier standards in construction technology and innovation to meet industry needs.

ASAHI SYNCHROTECH CORPORATION (JAPAN)

Head Office Location

2-13-34 Konan, Minato-ku, Tokyo



Head Office of PT Asahi Synchrotech Indonesia

Address

WISMA KEIAI 8th Floor Jl. Jend. Sudirman Kav. 3 Jakarta 10220

Phone

(62-21) 5724011, 5724012

Fax

(62-21) 5723417

Email

asindo@synchrotech.co.id

Website

synchrotech.co.id

Warehouse of PT Asahi Synchrotech Indonesia

Address

Kawasan Industri Delta Silicon 3 extension, Jl. Sungkai Timur F25-01 BB. Cikarang - Bekasi, Jawa Barat



Company Profile

To Be The Company Chosen by Challenge & Creation

Head Office PT Asahi Synchrotech Indonesia

WISMA KEIAI 8th Floor Jl. Jend. Sudirman Kav. 3 Jakarta 10220

Phone : (62-21) 5724011, 5724012

Fax : (62-21) 5723417

Email : asindo@synchrotech.co.id

